

EPP Scanner Installation Guide

Driver Installation

Connecting the Scanner to the PC

Using the Scanner

EPP Scanner Installation Guide



1

Unpacking the Scanner

Unpack the package and inspect the items closely to make sure no item is damaged.

The package should include:

- The Scanner
- Scanner Connection Cable
- Power Adapter
- EPP Scanner Installation Guide
- Scanner Driver and TextBridge Installation CD
- Photo Express Installation CD
- Scanning Utilities Manual (either included in the Installation CD or printed separately)

STOP

IMPORTANT: Please perform the following steps by first completing the software driver installation, then shutting down your computer system, before connecting the Scanner Connection Cable and the power cord to the scanner.

2

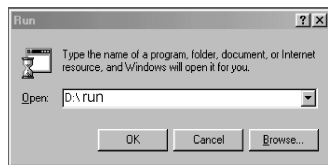
Driver Installation (For Windows® 95/NT4.0)

1. Insert the Driver Installation CD into your disk drive.
2. Follow all on-screen instructions.

NOTE: If in case after inserting the Driver Installation CD into your disk drive the Driver Installation Welcome screen does not appear, do the following:



1. Click on **"Start"** and select **"Run"**.



2. In the **"Run"** dialog box, type **"drive:\run"** where **drive** is your CDROM drive and click **"OK."**

3. Follow all on-screen instructions.

2A

Driver Installation (For Windows® 98)

1. Insert the Driver Installation CD into your disk drive. If in case after inserting the Driver Installation CD into your disk drive the Driver Installation Welcome screen does not appear, refer to steps 1 and 2 of the above driver installation for Windows® 95.

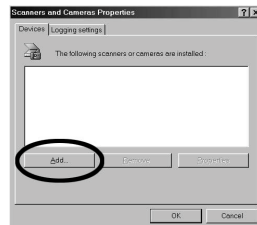
2. When the Scanners and Camera Properties dialog box appears, click **Add**.

3. Click **Next** when the Scanner and Camera Installation Wizard dialog box appears.

4. Select your scanner model from the list and click **Next**.

5. Follow all on-screen instructions until you reach the final Scanner and Camera Installation Wizard dialog box.

6. Click **Finish** to complete the driver installation.



5. Follow all on-screen instructions until you reach the final Scanner and Camera Installation Wizard dialog box.

6. Click **Finish** to complete the driver installation.



STOP

IMPORTANT: Please shutdown your computer system after completing driver installation before connecting the scanner to the PC.

3

Connecting the Scanner to the PC



Refer to the following illustration and steps to connect your scanner.

1. Power off the computer and any connected devices (e.g., display monitor, printer, modem, etc.).
2. Disconnect the printer cable from the printer port at the back of your PC.
3. Take the disconnected end of the printer cable and attach it to the port at the back of the scanner for Printer. Tighten the retaining screws.
4. Connect one end of the scanner cable to the printer port at the back of your PC and tighten the retaining screws.
5. Connect the other end of the scanner cable to the port at the back of the scanner for Computer.

6. Connect the power cord to the scanner and plug it into an appropriate power outlet. Upon turning on power to the scanner, the Windows operating system would automatically detect your scanner and update your system configuration.



4

Using the Scanner

There are two separate methods to scan an image, the Scan Dialog box and the TWAIN Dialog box. Refer to the Scanning Utilities Manual for a description of these to facilitate your use of the scanner; or refer to the on-line manual and help system any time when using the scanner software. This easy-to-use system contains detailed information about the scanner topics and its functions.

4A

To access the Scan Dialog box, you can do any of the following:

1. **The Direct Scan Icon:** Double-click the Direct Scan icon, located in your Windows taskbar; or
2. **The Scan Dialog Box Item:** Click on **"Start"** on your Windows desktop and locate the name of your scanner model under **"Programs"**. Then double-click the item **"Scan Dialog Box"**.



4B

To access the TWAIN Dialog box, you can do the following:

1. Launch the TWAIN-compliant program (e.g. Photo Express).
2. Under the File menu open the **Acquire** command and choose **Scanner** OR Click the Scanner icon.

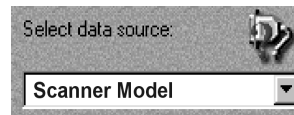


The Select Data Source dialog box appears.

3. Choose your scanner model from the list.

4. Click on the **"Acquire"** button.

The Select Data Source dialog box closes. The TWAIN Dialog box appears.



4C

To access the on-line manual and help system:

1. Click on **"Start"** and select **"Programs"**.
2. Click on your scanner model and select **"Scanner User Guide"**.