

SCSI Scanner Installation Guide

Driver Installation

Connecting the Scanner to the PC

Using the Scanner

1 Unpacking the Scanner

Unpack the package and inspect the items closely to make sure no item is damaged.

The package should include:

- The Scanner
- Scanner Cable
- PCI SCSI Interface Card
- Power Cord
- SCSI Scanner Installation Guide
- Installation CD
- Scanning Utilities Manual (either included in the Installation CD or printed separately)

STOP

IMPORTANT: Please perform the following steps by first completing the software driver installation, then shutting down your computer system, before connecting the PCI SCSI Interface Card to the computer and the power cord to the scanner.

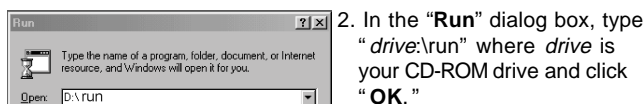
2 Driver Installation (For Windows® 95/98/NT4.0)

1. Insert the Driver Installation CD into your disk drive.
2. Follow all on-screen instructions.

NOTE: If, after inserting the Driver Installation CD into your disk drive, the Driver Installation Welcome screen does not appear, do the following:



1. Click on **"Start"** and select **"Run"**.



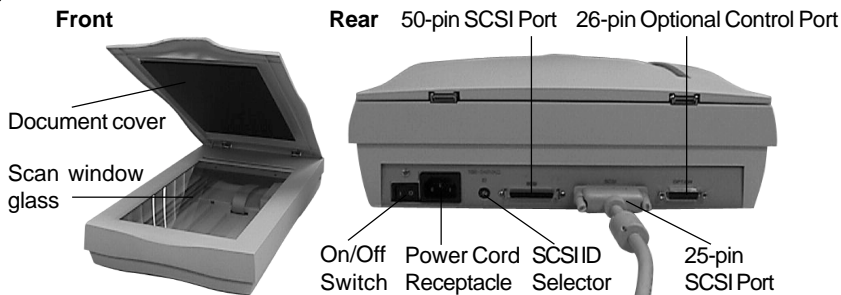
2. In the **"Run"** dialog box, type **"drive:\run"** where *drive* is your CD-ROM drive and click **"OK."**

3. Follow all on-screen instructions.

STOP

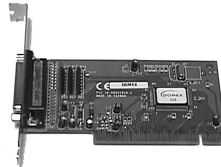
IMPORTANT: Please shutdown your computer system after completing the driver installation and before connecting the scanner to the PC.

3 Connecting the Scanner to the PC



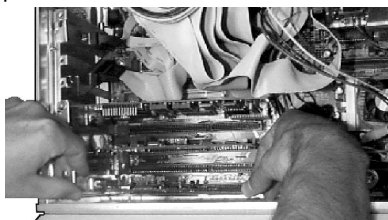
Refer to the following illustration and steps to connect your scanner.

1. Power off the computer and any connected devices (e.g., display monitor, printer, modem, etc.).
2. Remove the computer housing.
3. Select an empty slot and remove its back plate.
4. Remove the PCI SCSI interface card from the anti-static bag.
5. Insert the PCI SCSI interface card firmly into the empty slot and screw in the card's metal plate.



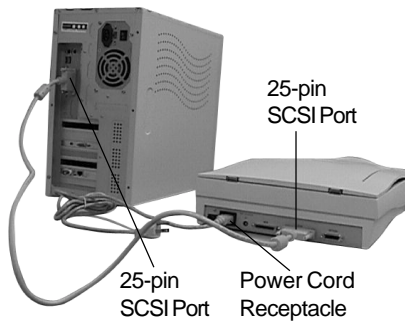
NOTE: Do not force the PCI SCSI interface card into the slot at an angle as you may cause damage to your computer.

6. Attach one end of the included scanner cable to the 25-pin SCSI port at the back of the scanner and tighten the retaining screws.



(SCSI port) that you just installed at the back of the computer and tighten the screws.

IMPORTANT: Before continuing, move the scanner's carriage lock switch (located on the side near the rear of the scanner) to the **Unlock** position. Failure to do so may cause damage to your scanner's scanning mechanism.



8. Connect the power cord to the scanner and plug it into an appropriate power outlet. Turn on the power on/off switch of the scanner.

IMPORTANT: Before continuing, lift the cover and wait for the scanning lamp to light and move part way down the Scanner Glass.

Upon turning on power to the scanner, the Windows operating system would automatically detect your scanner and update your system configuration.

4

Using the Scanner

There are two separate methods to scan an image, the Scan Dialog box and the TWAIN Dialog box. Refer to the Scanning Utilities Manual for a description of these to facilitate your use of the scanner; or refer to the on-line manual and help system any time when using the scanner software. This easy-to-use system contains detailed information about the scanner topics and its functions.

4A

To access the Scan Dialog box, you can do any of the following:

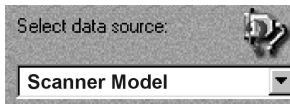
1. **The Cover Sensor:** Simply lift the cover and begin scanning. This scanner is equipped with a Cover Sensor feature that automatically opens the Scan Dialog box; or
2. **The Direct Scan Icon:** Double-click the Direct Scan icon, located in your Windows taskbar; or
3. **The Scan Dialog Box Item:** Click on "**Start**" on your Windows desktop and locate the name of your scanner model under "**Programs**". Then double-click the item "**Scan Dialog Box**".



4B

To access the TWAIN Dialog box, you can do the following:

1. Launch the TWAIN-compliant program (e.g. Photo Express).
2. Under the File menu open the **Acquire** command and choose **Scanner OR** Click the Scanner icon.
The Select Data Source dialog box appears.
3. Choose your scanner model from the list.
4. Click on the "**Acquire**" button.
The Select Data Source dialog box closes. The TWAIN Dialog box appears.



4C

To access the on-line manual and help system:

1. Click on "**Start**" and select "**Programs**".
2. Click on your scanner model and select "**Scanner User Guide**".

STOP

IMPORTANT: Before scanning your image at a maximum of 48-bit high color resolution, make sure that your system resources and the available memory in your hard disk is enough otherwise, your system may crash.

5

Moving the Scanner

IMPORTANT: Before continuing, move the scanner's carriage lock switch (located on the side near the rear of the scanner) to the **Lock** position. Failure to do so may cause damage to your scanner's scanning mechanism.

In case you need to ship the scanner for any reason, be sure to lock the carriage. It is also safer if you pack the scanner in its original box and use the original packing materials as they provide ample protection to the scanner.