

USB Scanner Installation Guide

Driver Installation

Connecting the Scanner to the PC

Using the Scanner

Driver Installation (iMAC)

1

Unpacking the Scanner

Unpack the package and inspect the items closely to make sure no item is damaged.

The package should include:

- The Scanner
- Power Adapter
- USB Scanner Installation Guide
- Installation CD
- Scanning Utilities Manual (either included in the Installation CD or printed separately)

2

Driver Installation

STOP

NOTE: Please complete the driver installation before installing the Scanner. Do not connect the power adapter to the scanner at this stage.

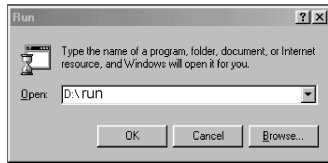
1. Insert the Driver Installation CD into your disk drive.
2. Follow all on-screen instructions.

NOTE: If, after inserting the Driver Installation CD into your disk drive, the Driver Installation Welcome screen does not appear, do the following:

1. Click on **"Start"** and select **"Run"**.



2. In the **"Run"** dialog box, type **"drive:\run"** where *drive* is your CD-ROM drive and click **"OK."**



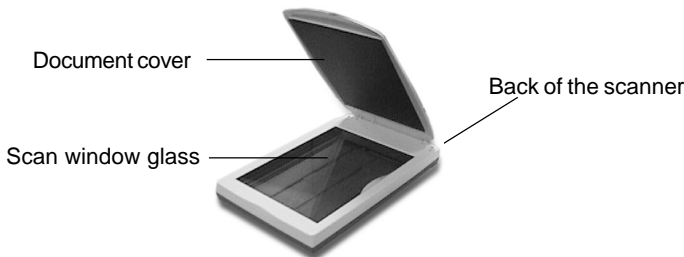
3. Follow all on-screen instructions.

STOP

IMPORTANT: When you are presented with the option of whether to restart Windows after completing the driver installation please choose **"Yes"**.

3

Connecting the Scanner to the PC



Refer to the following illustration and steps to connect your scanner.

1. With the power to your PC on, connect the scanner's USB cable to the USB port of your PC.
2. Connect the power adapter to the Scanner and plug it into an appropriate power outlet.

Upon connecting the power adapter, the Windows operating system would automatically detect your scanner and update your system configuration.



3A**For Windows 95 OSR2 Users:**

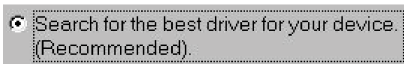
Upon installing the software driver and connecting the power adapter if the **Update Device Driver Wizard** dialog box appears, perform the following steps:

1. Click on the **"Next"** button.
2. On the next screen click on the **"Other Locations"** button and go into the **"Win95"** directory of your installation CD.
3. Click on the **"OK"** button and on the next screen Windows will confirm that it has found the driver for your scanner.
4. Follow all on-screen instructions to complete driver installation.

**3B****For Windows 98 Users:**

Upon installing the software driver and connecting the power adapter if the **Add New Hardware Wizard** dialog box appears, perform the following steps:

1. Click on the **"Next"** button.
2. On the next screen select the following option and go into the Win98 directory of your installation CD.



3. Click on the **"OK"** button and on the next screen Windows will confirm that it has found the driver for your scanner.
4. Click the **"Finish"** button to exit.



NOTE: Since your scanner model is equipped with a Cover Sensor, upon raising the cover of your scanner you will be given a choice on whether to use the Scan Dialog box (refer to the Scanning Utilities Manual) that came with your scanner or use the Imaging program (refer to your Windows 98 reference guide) that is built in to your Windows 98 operating system.

4**Using the Scanner**

There are two separate methods to scan an image, the Scan Dialog box and the TWAIN Dialog box. Refer to the Scanning Utilities Manual for a description of these to facilitate your use of the scanner; or refer to the on-line manual and help system any time when using the scanner software. This easy-to-use system contains detailed information about the scanner topics and its functions.

4A

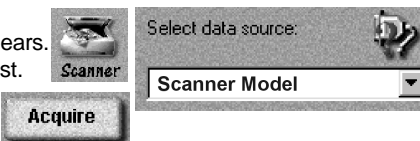
To access the Scan Dialog box, you can do any of the following:

1. **The Cover Sensor:** Simply lift the cover and begin scanning. This scanner is equipped with a Cover Sensor feature that automatically opens the Scan Dialog box; or
2. **The Direct Scan Icon:** Double-click the Direct Scan icon, located in your Windows taskbar; or
3. **The Scan Dialog Box Item:** Click on **"Start"** on your Windows desktop and locate the name of your scanner model under **"Programs"**. Then double-click the item **"Scan Dialog Box"**.

**4B**

To access the TWAIN Dialog box, you can do the following:

1. Launch the TWAIN-compliant program (e.g. Photo Express).
2. Under the File menu open the **Acquire** command and choose **Scanner**. Click the Scanner icon. The Select Data Source dialog box appears.
3. Choose your scanner model from the list.
4. Click on the **"Acquire"** button. The Select Data Source dialog box closes. The TWAIN Dialog box appears.

**4C**

To access the on-line manual and help system:

1. Click on **"Start"** and select **"Programs"**.
2. Click on your scanner model and select **"Scanner's User's Guide"**.

STOP

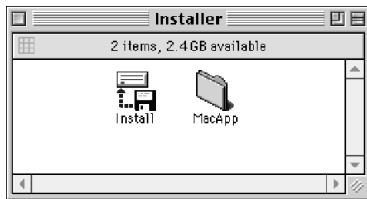
IMPORTANT: Before scanning your image at a maximum of 48-bit high color resolution, make sure that your system resources and the available memory in your hard disk is enough otherwise, your system may crash.

5

Driver Installation (iMac)

NOTE: Please complete the driver installation before installing the Scanner. Do not connect the power adapter to the scanner at this stage.

1. Insert the Driver Installation CD into your disk drive.
2. Wait for the **Installer** icon to appear on your desktop.
3. Double-click on the **Installer** icon to open the **Installer** dialog box.



4. Double-click on the **Install** icon.
5. Continue to follow all on-screen instructions to complete the driver installation.

5A

Connecting the Scanner to the iMac

Refer to the following steps to connect your scanner.

1. With the power to your iMac on, connect the scanner's USB cable to the USB port of your iMac.
2. Connect the power adapter to the Scanner and plug it into an appropriate power outlet.