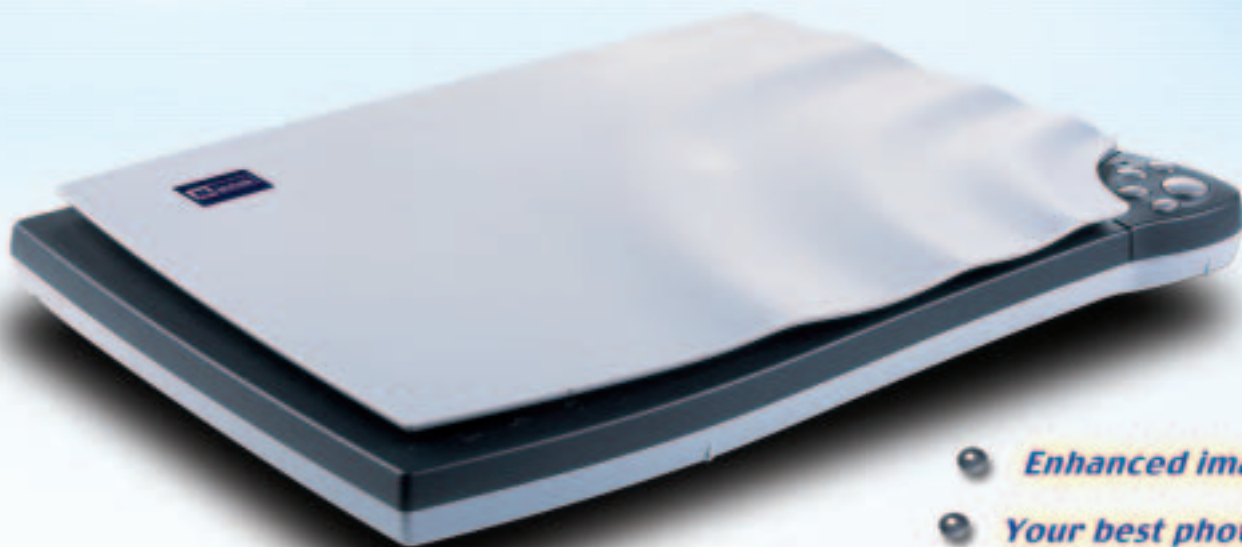


Be @rPaw

1200CU Plus

Imaging Your Life



- *Enhanced imaging intelligent*
- *Your best photo buddy*
- *Life image sharing*

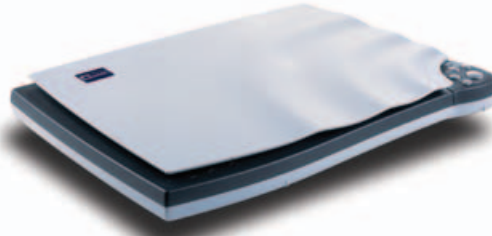
Features

- True 48-bit color provides superior color.
- 5 one-click buttons for handy functional operations.
- Mustek Personal Assistant League for Image System (M-Pal iIS) software offers superior image quality.
- Save space with scanner stand and coiled USB cable in back.
- Sound effects enhance your fantastic scanner's interactive operations.
- Compact design makes scanner portable and easy to carry.



[Usages & Applications]

- **Multimedia-ready photo sharing**



- *Enhanced imaging intelligent*
- *Your best photo buddy*
- *Life image sharing*

- **5 one-click operating buttons**

- **Value-added software bundled**
- DVD Picture Show
- Photo Express
- FineReader
- Acrobat Reader
- Games
- e-Life Pal
- And more....

- **M-Pal Intelligent Image System enhanced**
- Smart Image Merge
- Support JPEG2000
- Smart Photo Refresh

- **Speedy multiple photo scanning at one touch**

[Minimum System Requirement]

- IBM PC or compatible with a 200 MHz Pentium-based processor
- Microsoft Windows® 98se / Me / 2000 / XP
- Available USB port
- SVGA color monitor
- CD-ROM or DVD-ROM drive
- At least 128 MB RAM
- 220MB available hard disk space for software installation

[Specification]

• Scanner Type	Color CIS Flatbed
• Light Source	LED
• Color Mode	True 48 bits
• Gray Mode	True 16 bits
• Text / Line Art	1-bit / pixel (2 levels)
• Resolution	Optical : 600 dpi (H) x 1200 dpi (V)
	Software enhanced :
	19200 dpi(H) x 19200 dpi(V)
• Scan Area	8.5" x 11.7" (216 mm x 297 mm)
• Interface	Full Speed / USB2.0 Compatible
• Dimensions (L x W x H)	15.9" x 11.1" x 1.5"
	(405 mm x 281.5 mm x 37 mm)
• Power Consumption	2.5 W (Bus Power 0.5A x 5V DC)
• Weight	1.9Kg (4.2 lbs)
• Support OS	Windows® 98se / Me / 2000 / XP

[CD Contents]

- Installation CD
- Software Driver
- FineReader™ OCR
- Acrobat Reader
- TextBridge
- Interactive Help System
- Application CD
- DVD Picture Show
- Photo Express™ SE CD

[Package Contents]

- BearPaw 1200CU Plus Scanner
- Installation CD
- Application CD
- Installation Guide



Mustek Systems, Inc.
Tel.:886-3-577-9373
Fax:886-3-578-3328
www.mustek.com.tw

Mustek Optic-Computer & Communication
Tel.:49-2131-162-840
Fax:49-2131-103-830
www.mustek.de

Mustek, Inc.
Tech support tel.:1-949-788-3600
Tech support fax:1-949-788-3670
www.mustek.com

Mustek Pacific, Inc.
Tel.:886-2-2781-5161
Fax:886-2-2773-0134
www.mustek.com.tw